



# GLX-OUTLET-15A

## 120VAC/15A Snap-In Outlet Replacement

### Step 1

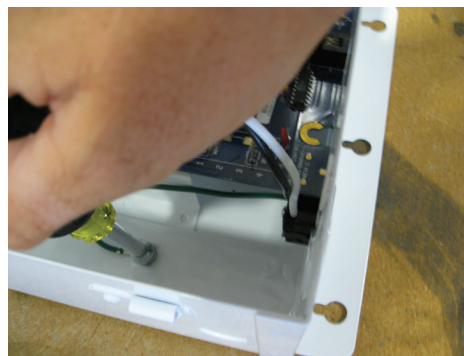
#### Removal of Snap-In Outlet

120 VAC/15A Snap-in Outlet.



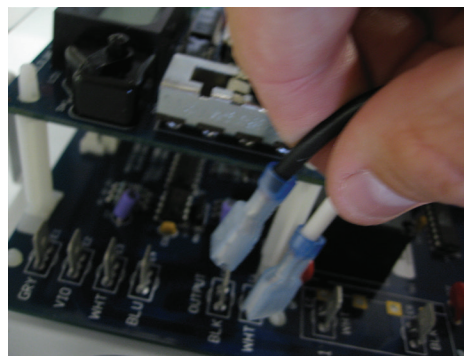
### Step 2

Unscrew ground lug from the can using a 5/16" bit



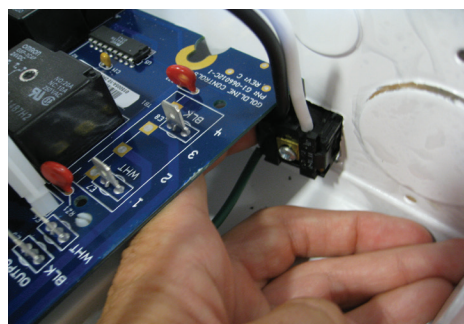
### Step 3.

Unplug the black and white wires from the PCBA display board.



### Step 4.

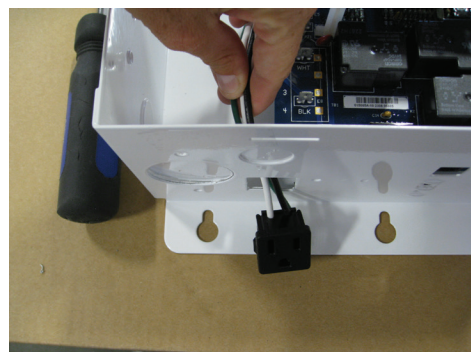
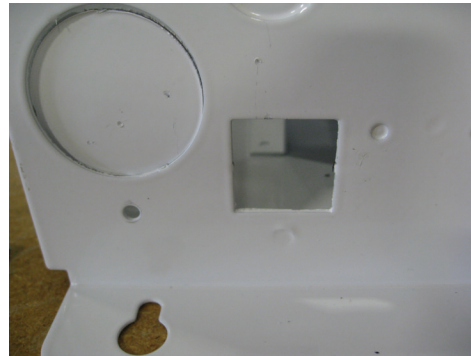
Press the side that's under the board with finger if screwdriver doesn't fit



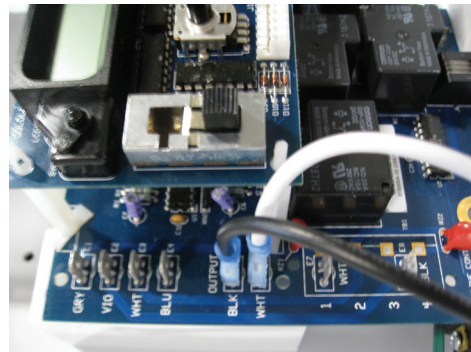


## **Step 5.** Re-Install Snap-In Outlet

To re-install outlet, feed wires through the can and snap in.

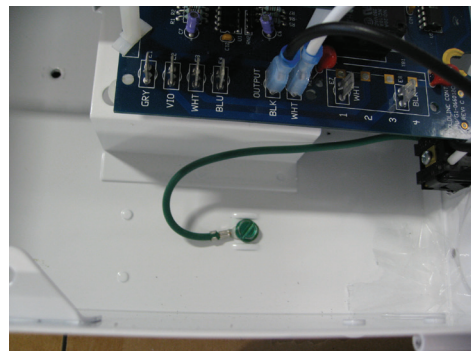


## **Step 6.** Plug the black and white wires into the PCBA board from the outlet. Follow the color code on board



## **Step 7.** Screw the ground wire into the can using the green ground lug.

Use a 5/16" bit



## **Step 8.** Unit has been successfully replaced.

Hayward Industries  
400 Connell Drive, Suite 6100  
Berkeley Heights, NJ 07922  
Phone: (908) 355-7995  
[www.hayward.com](http://www.hayward.com)