



ChlorKing® Sentry AquaGuard (SAG) ultraviolet light systems add a second level of protection against pathogens in the pool water. Their unique design employs high output amalgam technology with 254nm wavelength for sterilization and 185nm wavelength for oxidation for better chloramine control and inactivation of chlorine resistant bacteria.



Available in multiple capacities with both plastic and stainless-steel outer bodies and flange sizes from 2" to 10" inlet and outlet options for flow rates up to 1140 gpm.

Sentry AquaGuard UV (SAG) systems can be installed vertically or horizontally and will fit into most existing pump rooms.

A LED control panel allows the operator to

visually inspect operation and will warn of any malfunction or situation that needs attention.

Sentry AquaGuard UV (SAG) systems feature a patent pending quick disconnect sleeve assembly for the easiest quartz sleeve removal in the industry. This unique design allows the operator to remove the sleeves in less than 1 minute when changing, cleaning or replacing is required.



Quick-disconnect sleeve for easy maintenance

Sentry AquaGuard (SAG) ultraviolet systems are designed for commercial pools and spas and pay for themselves through lower cost of operation and durability.

VÜ RETRO
COLOR LED LIGHTS

Designed to fit in a Pentair® GloBrite® Niche (#25014P and #25015P) as well as a standard 1.5" threaded wall fitting. Compatibility with ColorLogic®, OmniDirect Mode®, ColorSplash®, Pentair® and Jandy® light modes

Comes in 100' & 150' cords.



Paramount SwingJet

Wall Return Inlets

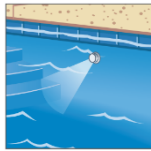
- Improve circulation & heating



The **SwingJet** has an infinitely adjustable 3-step 90° cleaning arc and a patented automatic reversing mechanism.

When activated the Swingjets pop out to deliver a high-pressure stream of water. When not operating the Swingjets retract and then rotate to a new position upon the next activation.

The **SwingJet** is designed to fit into most 1 1/2" threaded wall return inlets and can be aimed to target hard-to reach



places: near steps to enhance debris removal and along walls where they can both clean the wall and help sweep debris towards the main drain.

SwingJets keep the pool clean and healthy by circulating warmer water and chemicals from the surface of the pool to help eliminate evaporation of chemicals and reduce heating costs.



Scan the QR code to see the SwingJet operate

Amerrec AK Steam Generators

- First Class Performance

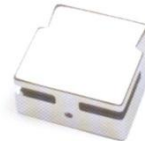
Adding steam to a shower simply requires an enclosure and the addition of a steam generator and control. Luxury is added without using any extra space.

The **Amerrec AK** steam generator uses full power to quickly heat up the steam room to its preset temperature, then cuts power to half its elements. The result is a more consistent flow of soft steam and more stable temperature.



The Comfort Flo Steam Head gives an improved dispersion pattern that provides even heat throughout the steam room. The steam head's internal Ryton plastic insulator prevents the exterior metal surface from reaching high temperature.

ComfortFlo Steamhead



Amerrec is a separate, independent company. **Amerrec** steam generators can be consolidated with your Hayward shipment for convenience and cost savings.

AquaSolar® GL235

Solar Controller

- A little help from the sun

The **AquaSolar® GL235 Solar Controller** is America's best-selling entry level microprocessor based solar pool heating control system.



The controller automatically maximizes solar heat collection by actuating a 24V valve when there is solar heat available.



GVA-24 Actuator

With a single-setting, precision temperature adjustment - water is heated to a set temperature and circulated back into the pool or spa.



PSV 3-way Valve

Advanced features include programmable recirculation freeze protection, nocturnal cooling, and optional booster pump. LED indicators show status of system operations.



» For more information on the products mentioned, email img@hayward.com or fax +1.909.4444.0327 » haywardimg.com